

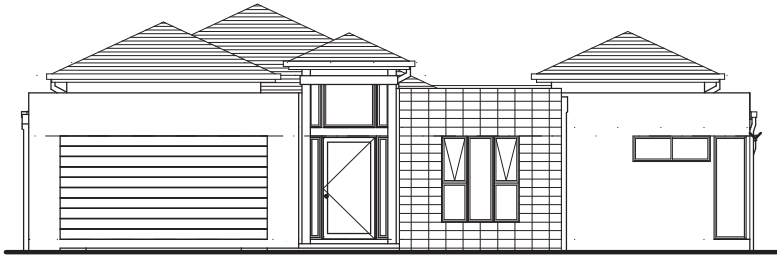
Riviera 30



2008 MASTER BUILDERS QUEENSLAND



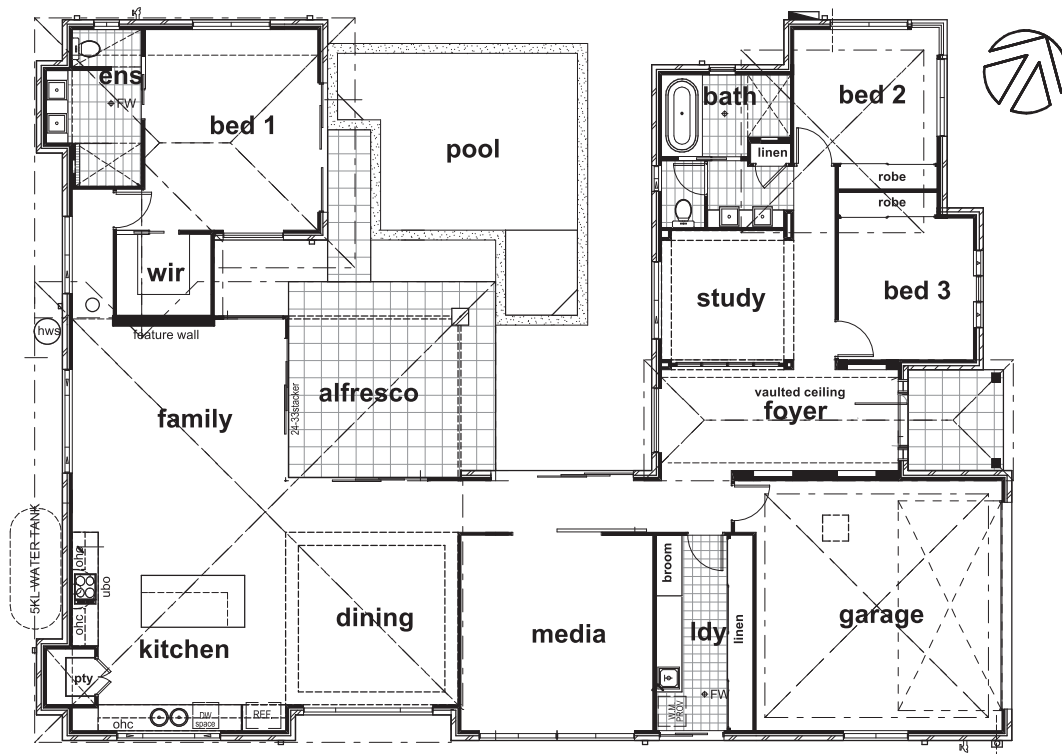
platinum
RESIDENTIAL designer homes



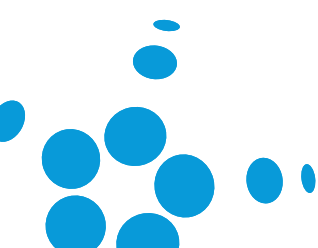
ELEVATION 1 -



ELEVATION 2 -



FLOOR PLAN



Space is a luxury! Platinum Residential Designer Home's **NEW Riviera 30** is all about generous proportions. Boasting three (3) metre ceilings and the merger of the kitchen, family, dining, alfresco and pool areas, a lifestyle of entertaining beckons.

With Queensland's lifestyle firmly entrenched in the outdoors, you'll certainly appreciate the functional open plan living of the **Riviera 30**. Glass stacker doors offer a seamless transition from the house into the alfresco & pool areas. You'll feel a true sense of intimacy in your private outdoor retreat, accessing the pool directly from the master suite and alfresco space.

The **Riviera 30** follows in the footsteps of the award winning **Resort 28**, adding a new dimension of scale to the quality and luxury synonymous with the Platinum Residential Designer Home name.

Enjoy the **Riviera 30's** ultimate resort style living in the heart of Hervey Bay's prestige estate, Ocean Blue.

Riviera 30



2008 MASTER BUILDERS QUEENSLAND



3 levels of satisfaction

1. Guaranteed start date
2. Guaranteed finish date
3. 18 weeks build time

platinum
RESIDENTIAL designer homes



Platinum Residential Designer Homes BSA No: 1123972

Sunshine Coast

tel (07) 5439 7397

email info@platinumproperties.com.au

Display Home 46 Whitehaven Way
Caloundra QLD 4551

Hervey Bay

tel (07) 4128 1333

email info@platinumproperties.com.au

Display Home 199 Long Street
Pialba, QLD 4655